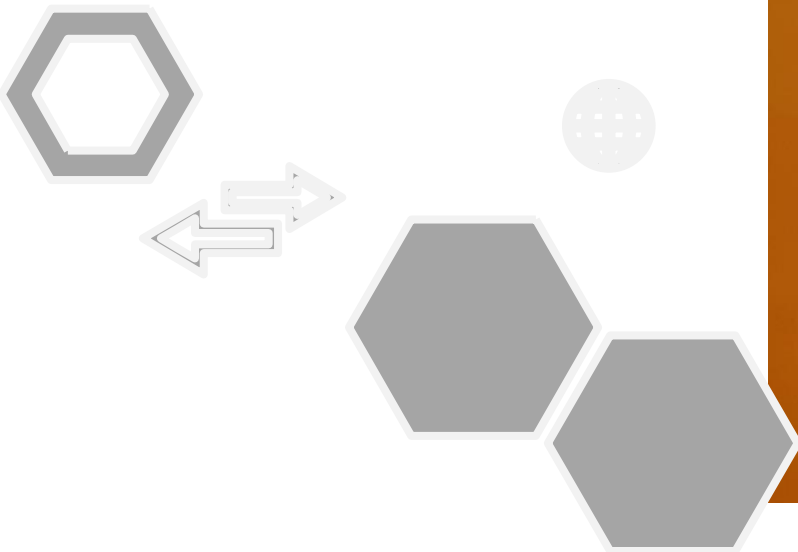




## LOCK for CABIN DOOR



**Effective Control**  
For Industrial Applications  
**GLMDL01**

# TECHNICAL PROPERTIES

## GENERAL

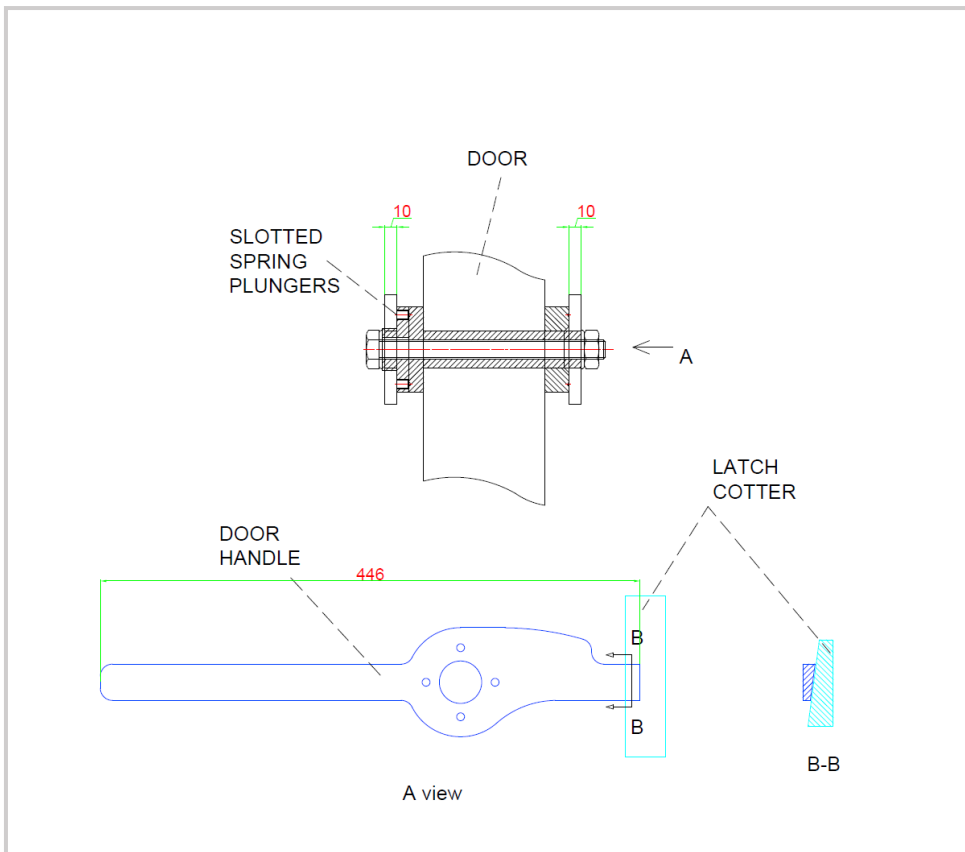
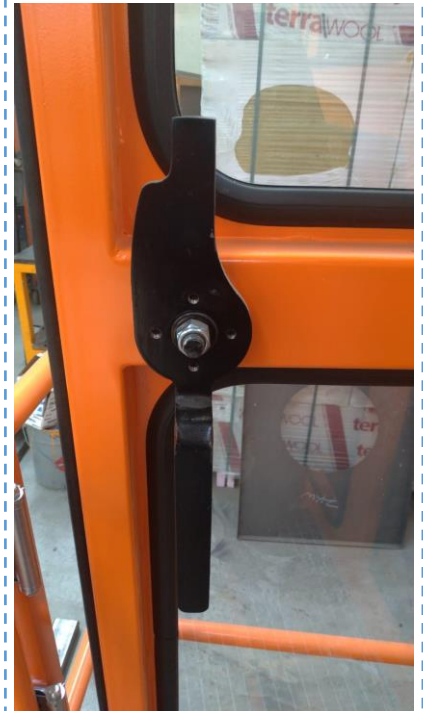
ADJUSTMENT	/ FOR CABIN CABIN
INSTALLATION	/ M16 SCREW DIN931
MATERIAL	/ ST37 BODY
TEMPERATURE	/ -15 C TO +70 C (STANDARD)
APPLICATION	/ OPERATOR CONTROL CABIN

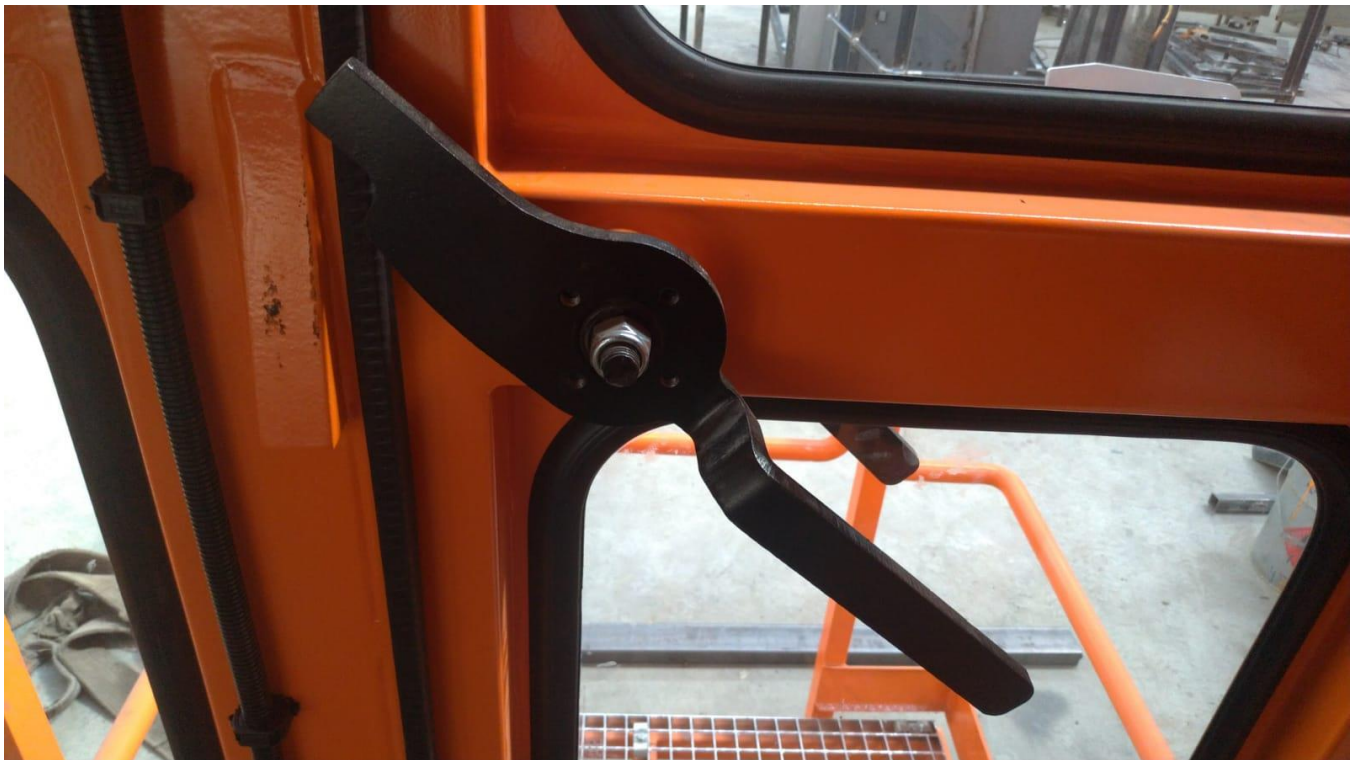
## COATING

BODY	/ PRIMER COAT
	TOP-COAT RAL 9005
	/ TOTAL 80 µm

It provides the perfect solution for dust and water tightness.

It provides ease of maintenance with its simple design.







## **GL Makina Ltd. Co.**

Phone : +90 312 395 63 17

Fax : +90 312 395 64 17

[www.glmakina.com](http://www.glmakina.com)

[info@glmakina.com](mailto:info@glmakina.com)